

# Steigerwaldmädchen

Musical score for the first system (measures 1-8). The score includes parts for Akkordpiano (Akk.), Klarinette (Klar.), Fagott (FH), Bariton (Bar.), Positiv (Pos.), Bass, and Drums. The key signature is B-flat major (two flats) and the time signature is 3/4. Chord symbols Bb, Eb, F7, and Bb are indicated above the Akk. staff. The music features a steady bass line and a rhythmic drum pattern.

Musical score for the second system (measures 9-16). The score includes parts for Akkordpiano (Akk.), Klarinette (Klar.), Fagott (FH), Bariton (Bar.), Positiv (Pos.), Bass, and Drums. The key signature is B-flat major (two flats) and the time signature is 3/4. Chord symbols Bb, F, and Bb are indicated above the Akk. staff. The vocal line in the Akk. part includes the lyrics: "Steigerwald - Steigerwald - Mädchen, wie bist du so schön." The music continues with the same instrumental accompaniment as the first system.

Direktion 17 Fränkische Altensteiner

F<sup>7</sup> B<sup>b</sup>

Akk. Stei-ger-wald - Stei-ger-wald - Mäd - chen, wann werd' ich dich wie-der seh'n?

Klar.

FH

Bar

Pos.

Bass

Drums

25 B<sup>b</sup> F E<sup>b</sup> F E<sup>b</sup> B<sup>b</sup>

Akk. Au - gen fun-keln wie Son - nen - strah - len, leuch - tend blond das Haar.

Klar.

FH

Bar

Pos.

Bass

Drums

Steigerwaldmädchen

Direktion 33 Fränkische Altensteiner

E $\flat$  F $^7$  B $\flat$  F $^7$  B $\flat$

Akk. Scher - zen, sprin - gen, la - chen, sin - gen, im - mer noch ein - mal.

Klar.

FH

Bar

Pos.

Bass

Drums

41

F E $\flat$  B $\flat$

Akk. Glück-lich sein, das ist nicht schwer, wenn man dich so sieht.

Klar.

FH

Bar

Pos.

Bass

Drums

Steigerwaldmädchen

Direktion 49 Fränkische Altensteiner

Eb F7 Eb F7 Bb

Akk. Da - rum freu' ich mich so sehr, wenn ich an dich denk.

Klar.

FH

Bar

Pos.

Bass

Drums

57 Steigerwaldmädchen

Bb F Bb

Akk. Stei - ger-wald - Stei - ger-wald - Mäd - chen, wie bist du so schön.

Klar.

FH

Bar

Pos.

Bass

Drums

A musical score for the song 'Steigerwaldmädchen'. The score is written for a vocal line and a band. The vocal line is in the top staff, with lyrics: 'Stei - ger-wald - Stei - ger-wald - Mäd - chen, wann werd' ich dich wie-der seh'n?'. The band consists of several instruments: Akk. (Acoustic guitar), Klar. (Clarinet), FH (Flügelhorn), Bar. (Baritone), Pos. (Posaune/Tuba), Bass, and Drums. The score is in 2/4 time and features a key signature of one flat (B-flat). The tempo is marked '65'. The score is divided into two systems, with the first system ending at measure 65. The second system continues from measure 65. The score includes various musical notations such as notes, rests, and dynamic markings. The lyrics are written below the vocal line. The band parts are written in their respective staves, with the bass and drums parts providing a rhythmic foundation. The score is a full orchestration of the song, suitable for a live performance or recording.

B $\flat$  E $\flat$  F $^7$  B $\flat$

9 B $\flat$  F B $\flat$

Stei - ger - wald - Stei - ger - wald - Mäd - chen, wie bist du so schön.

17 F $^7$  B $\flat$

Stei - ger - wald - Stei - ger - wald - Mäd - chen, wann werd' ich dich wie - der seh'n?

25 B $\flat$  F E $\flat$  F E $\flat$  B $\flat$

Au - gen fun - keln wie Son - nen - strah - len, leuch - tend blond das Haar.

33 E $\flat$  F $^7$  B $\flat$  F $^7$  B $\flat$

Scher - zen, sprin - gen, la - chen, sin - gen, im - mer noch ein - mal.

41 F E $\flat$  B $\flat$

Glück - lich sein, das ist nicht schwer, wenn man dich so sieht.

49 E $\flat$  F $^7$  E $\flat$  F $^7$  B $\flat$

Da - rum freu' ich mich so sehr, wenn ich an dich denk.

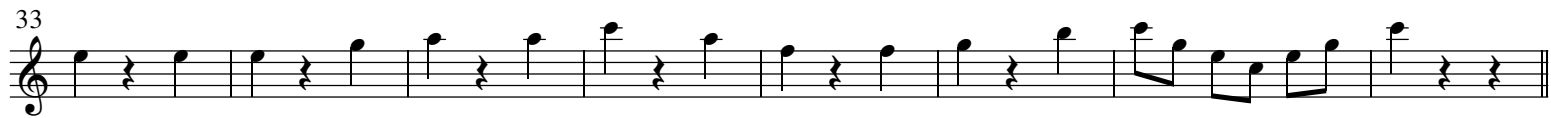
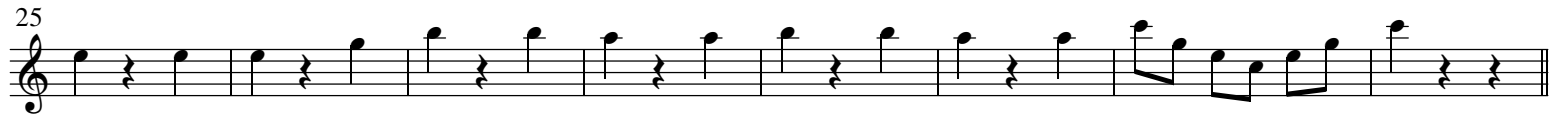
57 B $\flat$  F B $\flat$

Stei - ger - wald - Stei - ger - wald - Mäd - chen, wie bist du so schön.

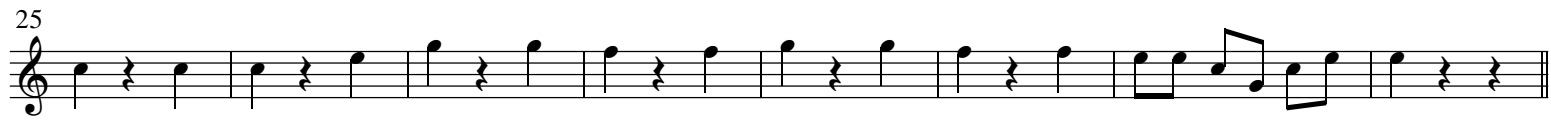
65 F $^7$  B $\flat$

Stei - ger - wald - Stei - ger - wald - Mäd - chen, wann werd' ich dich wie - der seh'n?

# Steigerwaldmädchen

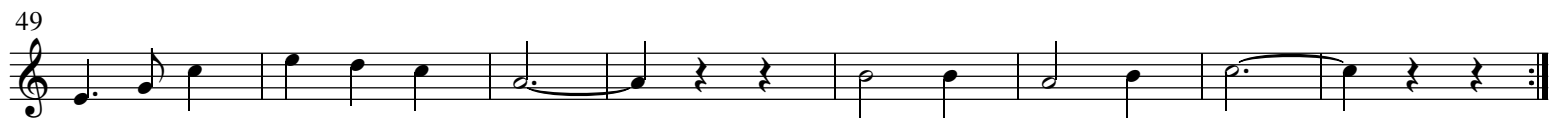


# Steigerwaldmädchen





# Steigerwaldmädchen





# Steigerwaldmädchen





# Steigerwaldmädchen



# Steigerwaldmädchen

First musical staff, measures 1-8. The key signature has one flat (B-flat) and the time signature is 3/4. The melody begins with a quarter note G2, followed by quarter notes A2, Bb2, and C3. It continues with quarter notes D3, E3, F3, and G3. The eighth measure contains a dotted quarter note G3, an eighth rest, and a quarter note F3. The piece concludes with a quarter note E3, a quarter note D3, and a final quarter rest.

9

Second musical staff, measures 9-16. It begins with a repeat sign. The melody consists of quarter notes G3, A3, Bb3, and C4. This is followed by quarter notes D4, E4, F4, and G4. The eighth measure has a dotted quarter note G4, an eighth rest, and a quarter note F4. The piece ends with a quarter note E4, a quarter note D4, and a final quarter rest.

17

Third musical staff, measures 17-24. The melody starts with quarter notes G3, A3, Bb3, and C4. This is followed by quarter notes D4, E4, F4, and G4. The eighth measure has a dotted quarter note G4, an eighth rest, and a quarter note F4. The piece ends with a quarter note E4, a quarter note D4, and a final quarter rest.

25

Fourth musical staff, measures 25-32. The melody begins with quarter notes G3, A3, Bb3, and C4. This is followed by quarter notes D4, E4, F4, and G4. The eighth measure has a dotted quarter note G4, an eighth rest, and a quarter note F4. The piece ends with a quarter note E4, a quarter note D4, and a final quarter rest.

33

Fifth musical staff, measures 33-40. The melody starts with quarter notes G3, A3, Bb3, and C4. This is followed by quarter notes D4, E4, F4, and G4. The eighth measure has a dotted quarter note G4, an eighth rest, and a quarter note F4. The piece ends with a quarter note E4, a quarter note D4, and a final quarter rest.

41

Sixth musical staff, measures 41-48. The melody begins with quarter notes G3, A3, Bb3, and C4. This is followed by quarter notes D4, E4, F4, and G4. The eighth measure has a dotted quarter note G4, an eighth rest, and a quarter note F4. The piece ends with a quarter note E4, a quarter note D4, and a final quarter rest.

49

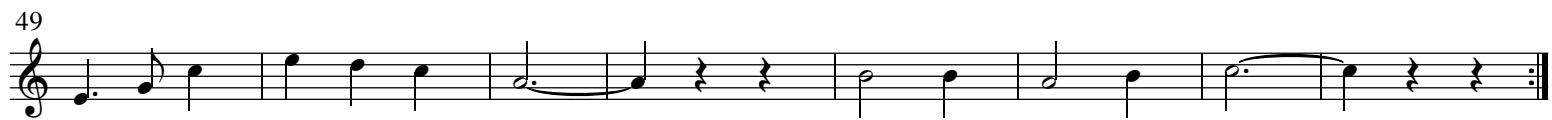
Seventh musical staff, measures 49-56. The melody starts with quarter notes G3, A3, Bb3, and C4. This is followed by quarter notes D4, E4, F4, and G4. The eighth measure has a dotted quarter note G4, an eighth rest, and a quarter note F4. The piece ends with a quarter note E4, a quarter note D4, and a final quarter rest.

57

Eighth musical staff, measures 57-64. The melody begins with quarter notes G3, A3, Bb3, and C4. This is followed by quarter notes D4, E4, F4, and G4. The eighth measure has a dotted quarter note G4, an eighth rest, and a quarter note F4. The piece ends with a quarter note E4, a quarter note D4, and a final quarter rest.

65

Ninth musical staff, measures 65-72. The melody starts with quarter notes G3, A3, Bb3, and C4. This is followed by quarter notes D4, E4, F4, and G4. The eighth measure has a dotted quarter note G4, an eighth rest, and a quarter note F4. The piece ends with a quarter note E4, a quarter note D4, and a final quarter rest.





9



17



25



33



41



49



57



65









9



17



25



33



41



49



57

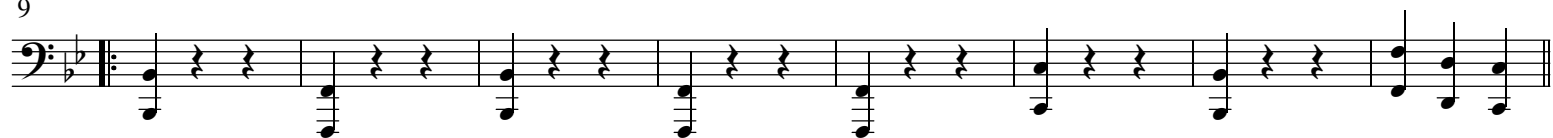


65





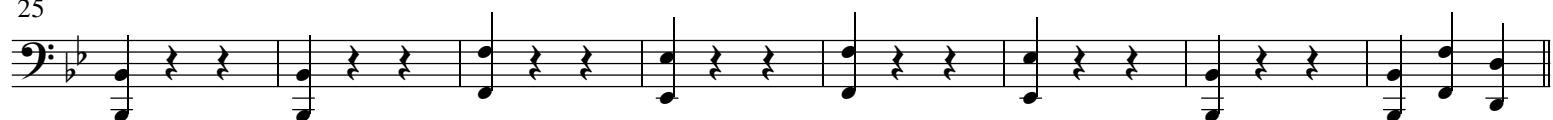
9



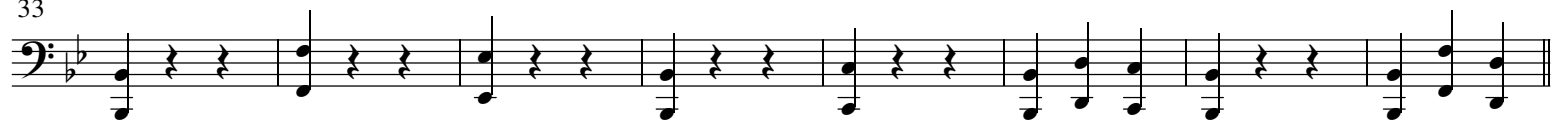
17



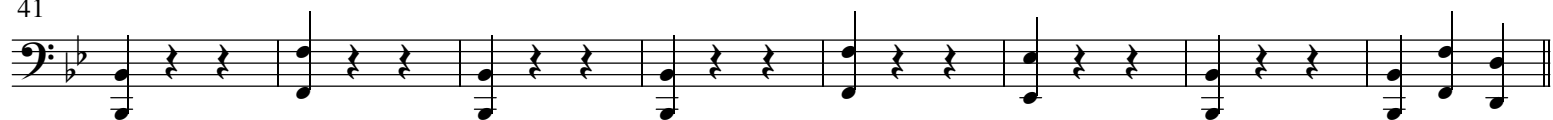
25



33



41



49



57



65



